

The quantifiable science to healing

8,000 hours of clinic-based research at the Bioenergy Healing Research Foundation (BHRF) and at The RaphaYad™ Bioenergy Healing Clinic reveal the scientific and quantifiable side to healing. Evidence proves how the body's bioelectromagnetic field (energy circuitry system) has an effect on the cellular make-up of the body and how it can affect our minds.

It is with our diligence and the desire to substantiate the effects of healing that we are able to not only cause a positive effect on the recipient, but just as importantly we are able to quantify it and repeat it. This breakthrough is a giant step forward for us as it has led to a momentum of interest from a wider sector of the general public as well as The NHS Directory of Complementary and Alternative Practitioners approving treatment to patients of NHS health care professionals.

The human bioelectromagnetic field

Modern-day science and medicine are beginning to appreciate that there is more to your body than just individual body parts and organs, that there is a form of biological connectivity that enables you to function as a whole. It is through our research at the BHRF that we can quantify that:

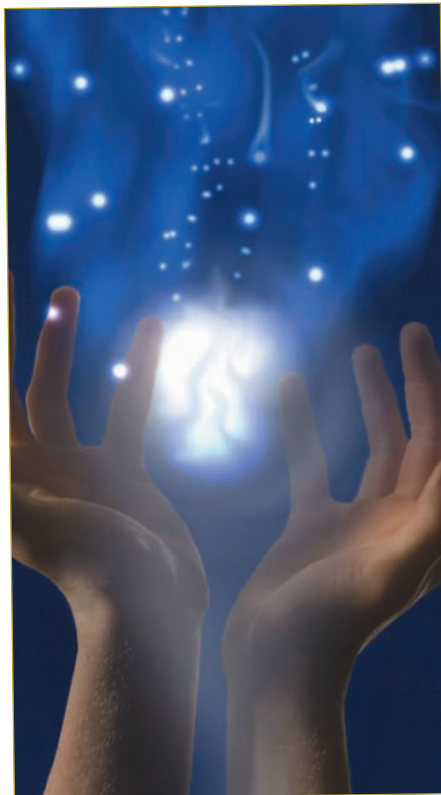
"It is the human body's bioelectromagnetic field that has replaced past spiritual or esoteric interpretations and takes modern-day healing into a new field of medicine".

Modern-day physics helps us to quantify that the biological connectivity of your body is known as 'bioelectromagnetism' - the electrical, magnetic and electromagnetic fields produced by living cells, tissues and organisms.

The bioelectromagnetic field of an individual affects the functioning of each cell in the body, its connections with the mind and the effects upon it. Your body's cells use bioelectricity to store metabolic energy, to do work or trigger internal changes, and to signal one another.

Research here at the BHRF concurs with research into bioelectromagnetism that each cell has a unique frequency as does each tissue. The combined tissues that make an organ similarly have a unique frequency, i.e. your heart or limb. All your body's organs combined together has a unique frequency. It is this unique frequency that makes you a distinct individual.

The Earth's geomagnetic field along with every man-made object or organic organism similarly



has a frequency and can affect you or you can affect it. Your bioelectromagnetic field is something that radiates within and around your body. Therefore we can infer that although you are an individual, you do not exist in isolation as you cause an effect and are affected by everything in your vicinity.

The tangibility of RaphaYad™ Bioenergy Healing

Having undertaken 8,000 hours of clinic-based research, results have shown that a RaphaYad™ Bioenergy Healing practitioner has a unique ability to access his/her own bioelectromagnetic field on a heightened level to

access and cause a positive effect on that of a client.

As you have a unique frequency, whether the practitioner is in close proximity to you or at a distance, the practitioner's bioelectromagnetic frequency travels along photons to connect with yours.

A Bioenergy Healing practitioner can initiate an innate and specific signal to your body utilising the interaction of the bioelectromagnetic field, which your body's system is able to unscramble, which then causes a positive reaction.

Results have demonstrated that this process releases blockages and brings order to individual cells in your body as well as on a neuron level to your mind and ultimately your perception. This in turn increases your ability to function, heal and repair beyond your current level of functioning.

Beyond the body map

RaphaYad™ Bioenergy Healing does not use body maps or textbook treatments for individual symptoms. One of the unique tools that the Bioenergy Healing practitioner incorporates is a scanning technique, which is a process that uses the eyes to x-ray your body on an energy level.

This exceptional tool pinpoints your primary blockage point to then utilise the hands-on/off techniques. This dynamic approach enables the treatment to get to the root cause of your symptoms rather than your manifested symptom, which is a by-product of the blockage(s), i.e. cellular disorder and psychological issues.

The hands-on/off techniques have an effect of (re-)activating your body's innate healing and repair mechanism whilst simultaneously releasing the memory patterns on a cellular level and to your mind. This is a form of re-wiring and defragmentation of your brain and body that is the equivalent of pressing master reset buttons.

© Michael Cohen - Founder of the Bioenergy Healing Research Foundation and RaphaYad™ Bioenergy Healing. Training - Michael presents a unique opportunity for you to be one of eight students to enrol on the RaphaYad™ Bioenergy Healing Practitioner Training Course that incorporates a Licence to open a renowned Bioenergy Healing Clinic in your region of the UK or overseas. Six-month courses start in May and November 2010. Additionally, weekend Foundation Training Courses in 2010 are in March, June, September or November. Treatment - The RaphaYad™ Bioenergy Healing Clinic offers you 1-2-1 treatments in its clinic in London W1 and a dynamic form of distance healing for those unable to visit the clinic. Contact details - Telephone 0845 456 1336, Email info@bioenergyhealing.org.uk or visit www.bioenergyhealing.org.uk for full details of techniques, extensive case notes, treatment and the training school.